

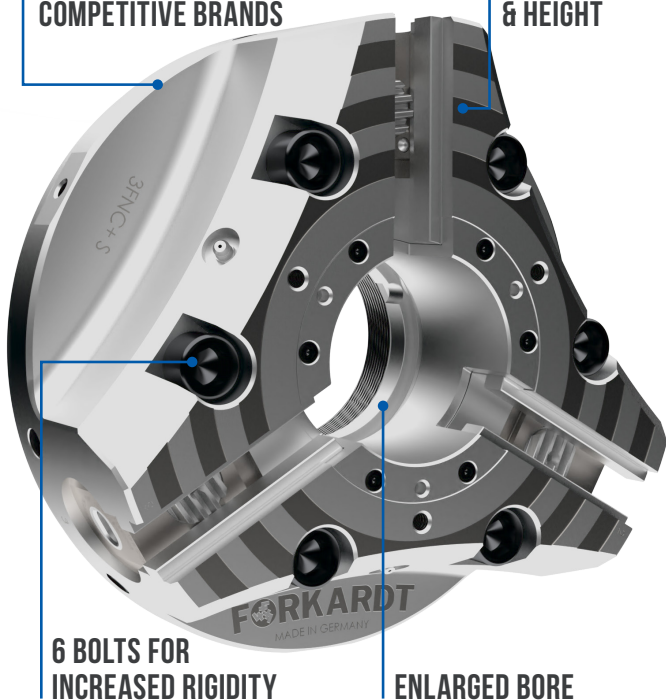




TIME FOR AN UPGRADE WITHOUT SACRIFICING YOUR INVESTMENT

BASE JAW IS
INTERCHANGEABLE WITH
COMPETITIVE BRANDS

REDUCED
WEIGHT
& HEIGHT



6 BOLTS FOR
INCREASED RIGIDITY

ENLARGED BORE

3FNC+POWER CHUCK WITH QUICK JAW CHANGE SYSTEM



**BUY AN FNC+
AT THE IMTS SHOW,
GET SECOND FNC+ FREE!**

OR

**BUY AN FNC+,
GET 40% OFF &
FREE SET OF SOFT JAWS.**

(Offer valid through 9/30/22)



FLEXC



Increased production efficiency &
optimization with quick changeovers

Continuous improvement & expanding
product lines to best serve industry needs

Precise & Accurate workmanship
Made in America

Interchangeable accessories
for standard collet families

Lifetime Guarantee on Collet Vulcanization

Backed by experienced Engineering
support & Customer Service Teams

SAVINGS OF UP TO \$6,500

**BUY 1 CHUCK
GET 6 COLLETS
& WRENCH FREE!**



**BUY 1 CHUCK
& GET 1 CHUCK
ABSOLUTELY FREE!**



*Some restrictions apply. Adjusted distributor discounts when promotion is used.

HARDINGE.COM | SHOP.HARDINGE.COM | 800-843-8801



TRU-CHANGE QCS

(QUICK CHANGE SYSTEM)



**SINGLE BOLT
MECHANISM**

The Forkardt QCS reduces setup time when changing out workholding systems on lathes. The QCS system uses the Forkardt Tru-Change geared coupling, to ensure industry leading repeatability when changing chucks.

QCS 3FNC POWER CHUCK



DEVELOPED FOR

A2-6, A2-8 and A2-11 spindle mounts, these chucks are secured using a single bolt mechanism for a quick changeover and are adaptable to any lathe suitable chucking system.

AMERICAN QUALITY SWISS WORKHOLDING



10% OFF ALL SWISS WORKHOLDING

**1-2 BUSINESS DAY
DELIVERY** 



*For stocked finished and semi-finished inventory. Promotion ends 09/31/2022

HARDINGE.COM | SHOP.HARDINGE.COM | 800-843-8801



Hardinge offers unrivaled support for **ALL** Swiss machines

High-precision size, accuracy, and total indicator runout to excel in the most demanding of jobs

Careful and thorough inspection to ensure performance

Robust product offerings in every style for any workholding requirement

- COLLETS
- GUIDE BUSHINGS
- BAR LOADERS
- TOOL HOLDERS
- CUSTOM SPECIALS

Our Customer Service & Consultation team has you covered with stress-free ordering:

 **1-833-COLLETS**

Call our Swiss Workholding specialists today!

FORKARDT[®]

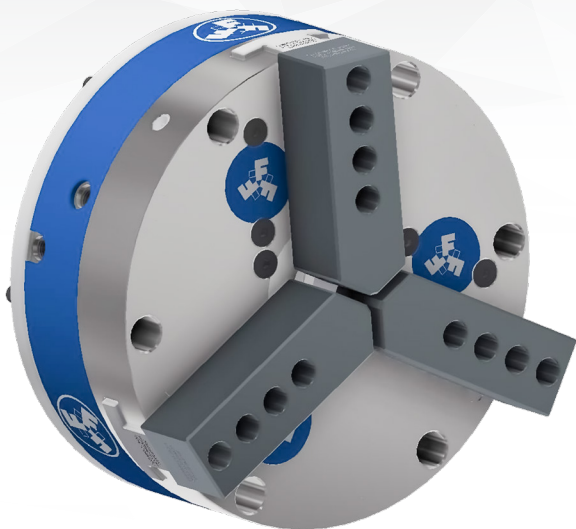
SHAFT CHUCK (FSC)



BENEFITS USING THE FORKARDT SHAFT CHUCK

| Forkardt Shaft Chuck | vs | Standard Sliding Chucks |
|---------------------------------|-----------|---------------------------------------|
| Manufacturing Time | | 37% Processing time savings |
| Quality Improvement | | 5% Improvement |
| Increased Capacity | | 60% Additional components |
| Payback Period | | Less than 6 Months |





**INTRODUCING A STANDARD LINE
OF PRECISION AIR CHUCKS**

PRECISION AIR CHUCK

The Forkardt product is designed to not only meet current standard designs, but in utilizing the strong engineering capabilities of Forkardt Workholding, provide custom solutions that meet or exceed current market offerings.

Forkardt will offer a full line
of products, from 3" up to 12"

PRECISION AIR CHUCK SPECIFICATIONS

| Chuck Size | 4" 100 mm | 6" 150 mm | 8" 200 mm |
|-------------------|----------------------------|----------------------------|------------------------------|
| Chuck Model | 4-120-3 | 6-120-3 | 8-120-3 |
| Chuck Part Number | 3PAC4000 | 3PAC6000 | 3PAC8000 |
| # of Jaws | 3 | 3 | 3 |
| Chuck Accuracy* | .00005" .0012 mm | .00005" .0012 mm | .00005" .0012 mm |
| Jaw Stroke** | .120" 3.0 mm | .120" 3.0 mm | .120" 3.0 mm |
| Max. Clamp Force | 570 lbf/Jaw 258 kgf/Jaw | 870 lbf/Jaw 395 kgf/Jaw | 1,630 lbf/Jaw 740 kgf/Jaw |
| Max. Air Pressure | 100 psi 6.9 bar | 100 psi 6.9 bar | 100 psi 6.9 bar |
| Max. RPM*** | 6,000 | 4,000 | 3,500 |
| Chuck Weight | 7 lb 3.2 kg | 16 lb 7.3 kg | 42 lb 19 kg |

*Chuck accuracy is defined as the T.I.R. (maximum radial and lateral runout) measured with a master gage, ** Total Jaw Stroke on Diameter, *** Max RPM determined by air pressure and jaw weight



3P110 MANUAL PRECISION CHUCK

Forkardt is launching a high precision scroll chuck for grinding applications. The sealed chuck body, with the additional seals on the base jaws, ensures that the lubricant stays in the body and the grinding dust stays out. A KDIN jaw interface and pre-machined jaws with a precision simultaneous chuck ensure the highest accuracy at the clamping point. A repeatability of <0.005 mm ensures process-reliable good workpieces.





DD125 ROTARY

SUPER-PRECISION® accuracy
for precision machining

NO BACKLASH with direct spindle
encoder positioning feedback

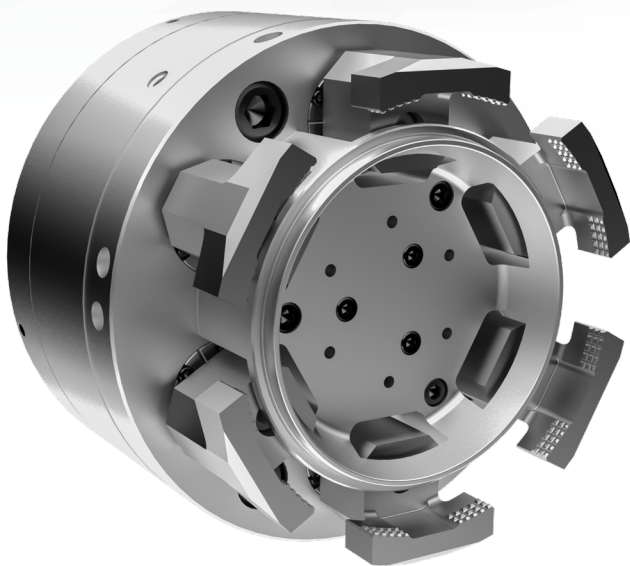
Optional High-Speed configuration for turning
and grinding applications, up to 2,000 rpm

A2-4 spindle nose/5C collet seat and
pneumatic closer for versatile tooling options

Array of spindle tooling for a
total production package

Can be used with a servo control as a stand-
alone unit or integrated with other controls





EQUALIZING COUNTER CENTRIFUGAL

(ECC 200, 260, 315 and 380mm)

Forkardt continues to be the leader in non-deforming workholding solutions with the introduction of the 200mm and 260mm 6-jaw standard pull down chucks.

FEATURES & BENEFITS

- Counter centrifugal for higher speeds
- 12 points of equalized force
- Single screw jaw mounting
- Post type jaw mounting for interchangeability
- Designed for maximum chip flow
- Increased chuck sensitivity through reduced power ratios
- Internal and external chucking
- Differential chucking capable
- Direct component greasing
- Compensating models available
- Jaw homing
- Toggle style actuation
- Equalizing actuator assembly

Forkardt's Equalizing Counter Centrifugal Power Chuck (ECC) operates on the same premise as the industry leading UBL chuck, with a new twist. The 6-jaw power chuck design incorporates a new counter-centrifugal mechanism that allows the chuck to rotate at higher speeds with minimal jaw force loss.